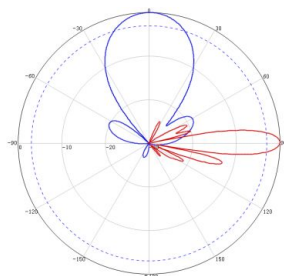


**KBT****880-960MHz 33° 20dBi 0-10° Integrated RET Antenna****KBT30DP20-0809AE-LI****Electrical specifications**

Frequency Range (MHz)	880-960
Polarization	±45°
Gain (dBi)	19.2
Electrical Downtilt (°)	0-10
Horizontal Power Beam Width (°)	33
Vertical Power Beam Width (°)	9.5
1st Upper Sidelobe Suppression(dB)	≥15
Front-to-Back Ratio (dB)	≥25
Axial Cross-Polar Discrimination (dB)	≥15
Cross-Polar Discrimination In±30°(dB)	≥10
Isolation (dB)	26
Impedance (Ω)	50
VSWR	≤1.5
Intermodulation IM3 (2×43dBm carrier)	≤-107dBm
Maximum Power (W)	350
Ground Protection	DC Grounding

**Mechanical specifications**

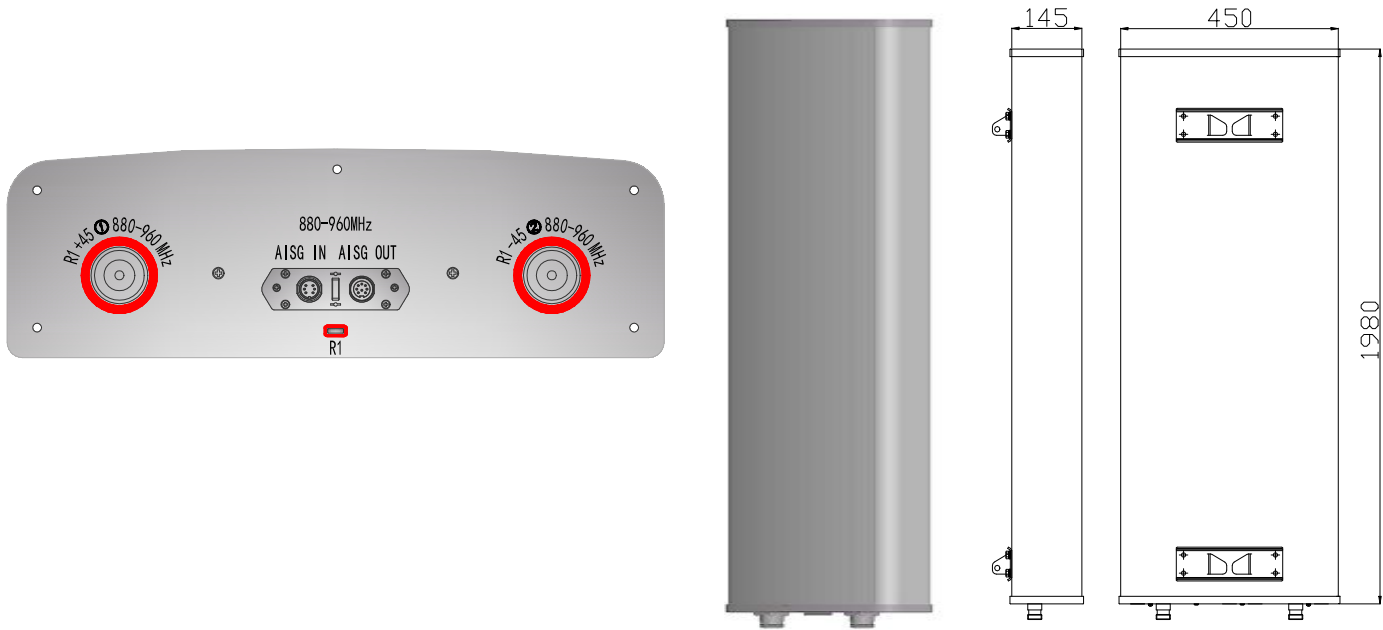
Connector	2*7/16 DIN-Female
Connector Position	Bottom
Height/Width/Depth (mm)	1980*450*145
Packing Size (mm)	2210*540*250
Antenna Weight (kg)	23
Bracket Weight (kg)	4.5
Radome Material	UPVC
Radome Color	Gray
Mechanical Tilt (°)	0-10
Operating Temperature (°C)	-40-60
Rated Wind Velocity (m/s)	56
Suitable Pole Diameter (mm)	Φ50-Φ115
Mounting Kit	JM-900DZA
RET Type	RET Integrated motor, replaceable
RET Model	KRCU20D-1

**880-960MHz: ±45°Pol.**



**KBT**

**880-960MHz 33° 20dBi 0-10° Integrated RET Antenna**



## Installation Sketch

